

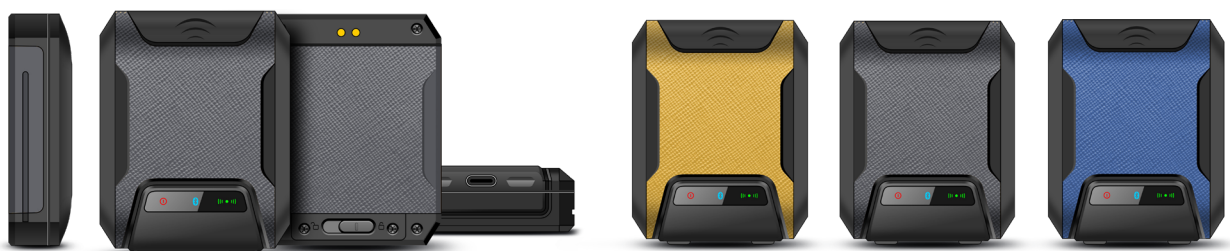
**CHAINWAY®**



# MR20

## Wearable UHF Reader

Chainway MR20 is our refined and new generation wearable Bluetooth UHF readers. Being a compact and portable device, it can be operated together with gloves, wristbands, or lanyards and make your work much more flexible and convenient. With a built-in UHF module, Chainway MR20 possesses a powerful data-collection and transmission function via a simple Bluetooth connection with Android/iOS devices. Removable battery and fast charging capability enable it to achieve work continuity for a long duration. Besides, this tiny device has the protection features like dustproof, waterproof, shockproof, and drop resistance. All these functions make the MR20 a most adaptable device in a wide spectrum of circumstances such as logistics & express delivery, retail store management, warehouse management, power patrol inspection, asset management, e-commerce picking, and tickets checking, etc. helping users free their hands and significantly improve work efficiency.



# Specification

## Physical Characteristics

<b>Dimensions</b>	50 × 62 × 19 mm / 1.97 × 2.44 × 0.75 in.
<b>Weight</b>	64 g / 2.26 oz. ( with glove: 90 g / 3.17 oz. )
<b>Color</b>	Yellow, Blue, Gray
<b>Port</b>	USB Type-C
<b>Button</b>	ON/OFF, SCAN
<b>Battery</b>	1200 mAh ( removable )
<b>Charging Current</b>	5 V / 1.5 A
<b>Charging Duration</b>	1 hours
<b>LED Indicator</b>	Red indicator will be ON when charging;
	Blue indicator will be ON when device has been fully charged;
	Green indicator will be ON when battery is higher than 20%;
	Green indicator will flash when battery is lower than 20%;
	Bluetooth is not paired when bluetooth indicator is OFF; Bluetooth is paired when bluetooth indicator is ON

## Performance

<b>MCU</b>	Cortex-M3
	72MHz

## Developing Environment

<b>SDK</b>	Android / IOS SDK Supported
<b>Security</b>	RFID Encrypted Module ( reserve )

## Communication

<b>USB Type C</b>	USB connection to realize data transfer
<b>BT</b>	Bluetooth Low Energy (BLE) 5.0

## User Environment

<b>Operating Temp.</b>	-20 °C to +50 °C
<b>Storage Temp.</b>	-40 °C to +70 °C
<b>Humidity</b>	5% RH - 95% RH non condensing
<b>Dropping</b>	1.2 m dropping on concrete
<b>Sealing</b>	IP65

## UHF

<b>Engine</b>	CM-3N module based on Impinj E310 CM-5N module based on Impinj E510
<b>Antenna parameter</b>	Linear Polarized Antenna (-2.2dBi)
<b>Frequency</b>	920-925 MHz / 902-928 MHz / 865-868 MHz
<b>Protocol</b>	EPC C1 GEN2 / ISO18000-6C
<b>Power</b>	0.5W (27dBm, support +19-27dBm adjustable)
<b>R/W range</b>	80 cm

\*Range depends on tags and environment

## Accessories (Optional)

Glove, wristband, lanyard, charging cradle for battery

Notice: Product specifications are subject to change without prior notice. / Model: MR20 / Update Date: 2023-03-02

**CHAINWAY**<sup>®</sup>

Shenzhen Chainway Information Technology Co., Ltd

Address: 9F, Building2, Phase 2, Gaoxinqi Industrial Park, Liuxian 1st Rd., Bao'an District, Shenzhen, Guangdong 518102, China

Tel: 0086-755-23223316

Fax: 0086-755-23223310

Email: sales@chainway.cn

Web: <http://www.chainway.net>