



**STD. Spec.**

**Adapter**



PWR-C66-5V2A-CN



PWR-C66-5V2A-EU



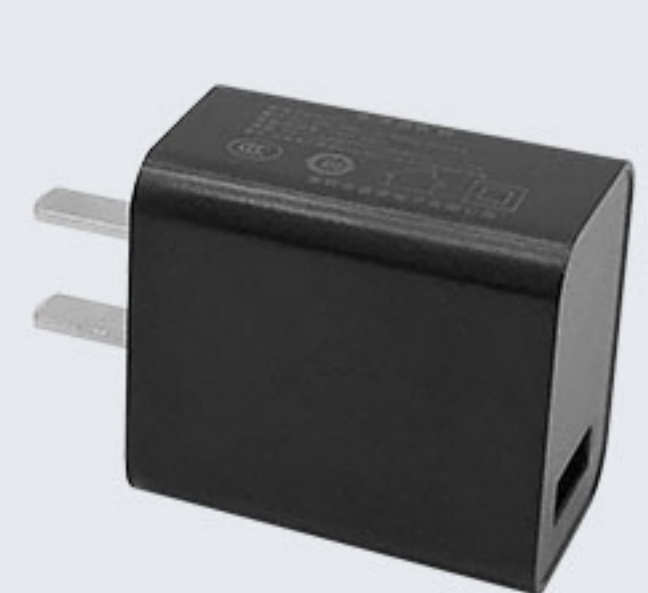
PWR-C66-5V2A-UK



PWR-C66-5V2A-US

Adapter(CN/EU/UK/US), I/P: 100-240V, O/P: 5V2A, use with DC-BK-TypeC cable

**QC Adapter**



PWR-18W-CN



PWR-18W-EU



PWR-18W-UK



PWR-18W-US

Quick Charge adapter(CN/EU/UK/US), I/P: 100-240V, O/P: 5V3A/12V1.5A/9V2A, use with DC-BK-TypeC cable  
 Comment: standard adaptor and QC adaptor are alternative.

**USB Cable**



**DC-BK-TypeC**  
1.0 meter Type-C cable

**Battery**



**BTRY-C66-43MA**  
4300mAh Li-Ion battery, 3.8V output

**Optional**

**Rugged Rubber Boot**



**RB-C66-RR/RB-C66-RRP**

Rugged Rubber Boot only, omni-directional protected.  
  
 RB-C66-RR does not support charging cradle.  
  
 RB-C66-RRP is pre installed with Type C & Pogo Pin I/O connector ,then it supports CRD-C66-RBC/CRD-C66-RBCE charging cradle.



**RB-C66-RRH/RB-C66-RRHP**

Rugged Rubber Boot with hand strap, omni-directional protected.  
  
 RB-C66-RRH does not support charging cradle.  
  
 RB-C66-RRHP is pre installed with Type C & Pogo Pin I/O connector ,then it supports CRD-C66-RBC/CRD-C66-RBCE charging cradle.



**RB-C66-RRC/RB-C66-RRCP**

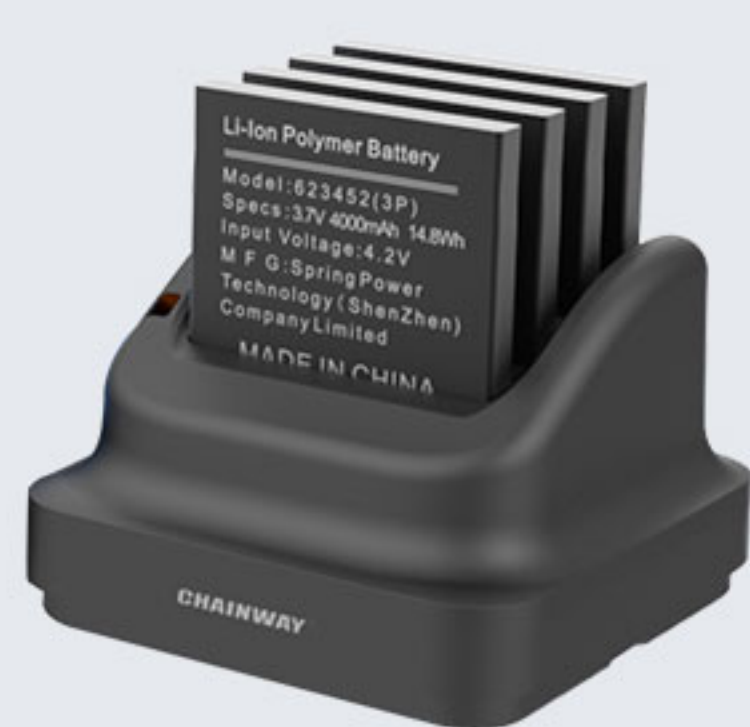
Rugged Rubber Boot with belt clip, omni-directional protected.  
  
 RB-C66-RRC does not support charging cradle.  
  
 RB-C66-RRCP is pre installed with Type C & Pogo Pin I/O connector ,then it supports CRD-C66-RBC/CRD-C66-RBCE charging cradle.



**RB-C66-P**

Type C & Pogo Pin I/O Connector, to be mounted with the rugged rubber boot, enable it to support charging cradle(CRD-C66-RBC/RBCE).The wired network is available when the rugged rubber boot is placed on the cradle(CRD-C66-RBCE).

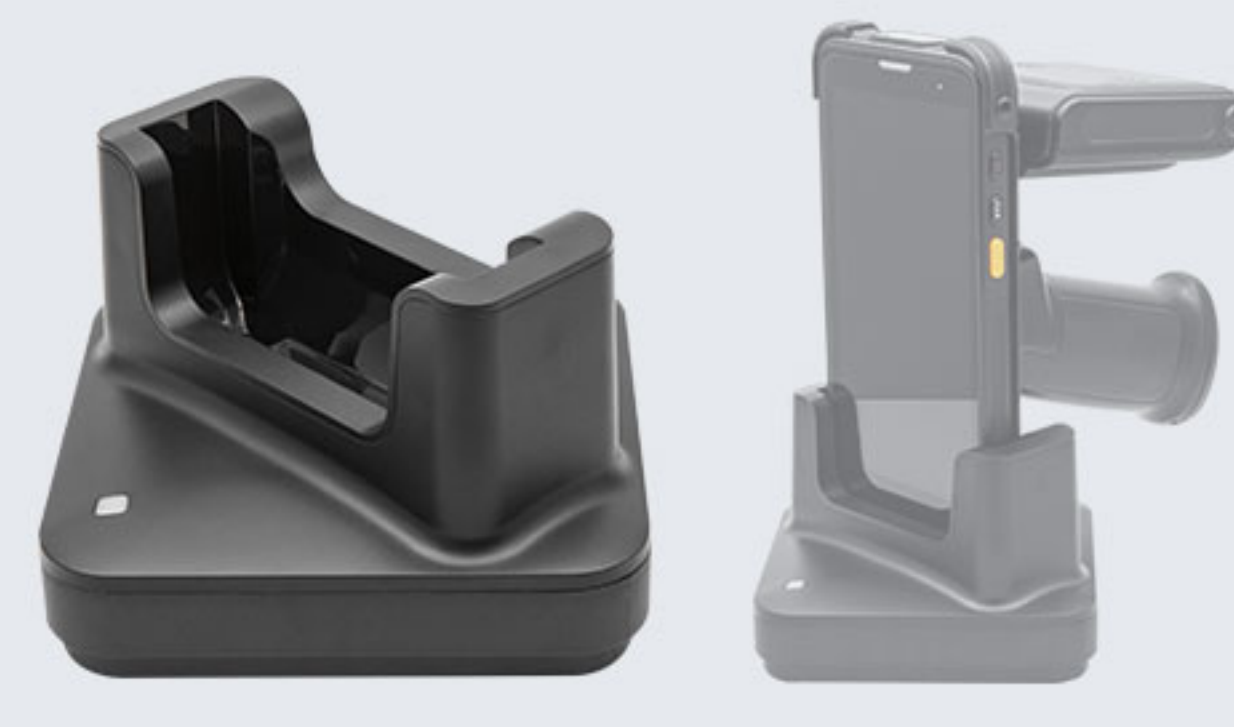
**Charging Cradles & Adapters**



**CRD-C66-MBC**  
Charging Cradle for main battery, up to 4 slots, use with DCPWR-12V2A-XX adapter.



**CRD-C66-PBC**  
Charging Cradle for pistol battery, up to 2 slots, use with DCPWR-12V2A-XX adapter.



**CRD-C66-DP**  
C66 charging cradle,only for device with pistol grip or device with UHF,use with DCPWR-12V2A-XX adapter.



**CRD-C66-INS**



**CRD-C66-RBC**

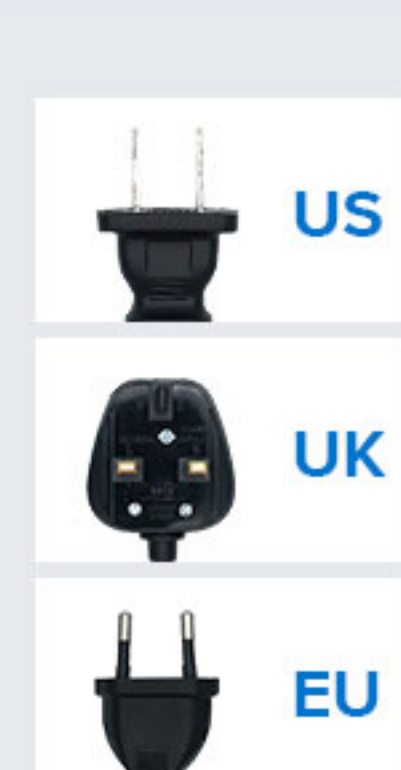


**CRD-C66-RBCE**

**CRD-C66-RBC/CRD-C66-RBCE**  
Charging Cradle for device, use with DCPWR-12V2A-XX adapter. CRD-C66-RBCE is an advanced CRD-C66-RBC, w/sync, w/ethernet, w/DC. The cradle cup has an insert that must be removed prior to inserting the C66 with Rugged Boot.



**DCPWR-12V2A-XX**  
Adapter(CN/EU/UK/US), I/P: 100-240V, O/P: 12V2A, DC



**CRD-MCB**

The base of 4-slots charging cradle set for 4 pieces of cradle, use with DCPWR-12V5A-XX adapter.  
 For load balance, recommendation:  
 1. 4x cradle for device  
 2. 3x cradle for device + 1x cradle for main battery  
 3. 2x cradle for device + 1x cradle for main battery + 1x CP for pistol battery

**Vehicle Cradle**



**CRD-C66-VC**  
Vehicle Charger Cradle, with type-C, use with DC-BK-TypeC cable. Car holder and car adapter need to be purchased separately

**Rubber Bumper**



**RB-C66-PR**  
Protective rubber bumper, upper and lower  
4 pcs M1.6 screws are necessary.

**Hand Strap**



**RB-C66-HS**  
Hand strap with buckle  
2 pcs M1.6 screws are necessary.

**Screen Protector**



**SP-C66**  
Tempered glass screen protector

**Pistol Grip**



**RB-C66-PS**  
Snap-On Trigger Handle and Rugged Boot Kit, use with optional pistol battery  
4 pcs M1.6 screws are necessary.



**BTY-C66-PB**  
Pistol battery, 5,200 mAh

